



RE·BAR·TIER™

RB611T

Re-Bar Twintier



OPERATING & MAINTENANCE MANUAL



WARNING

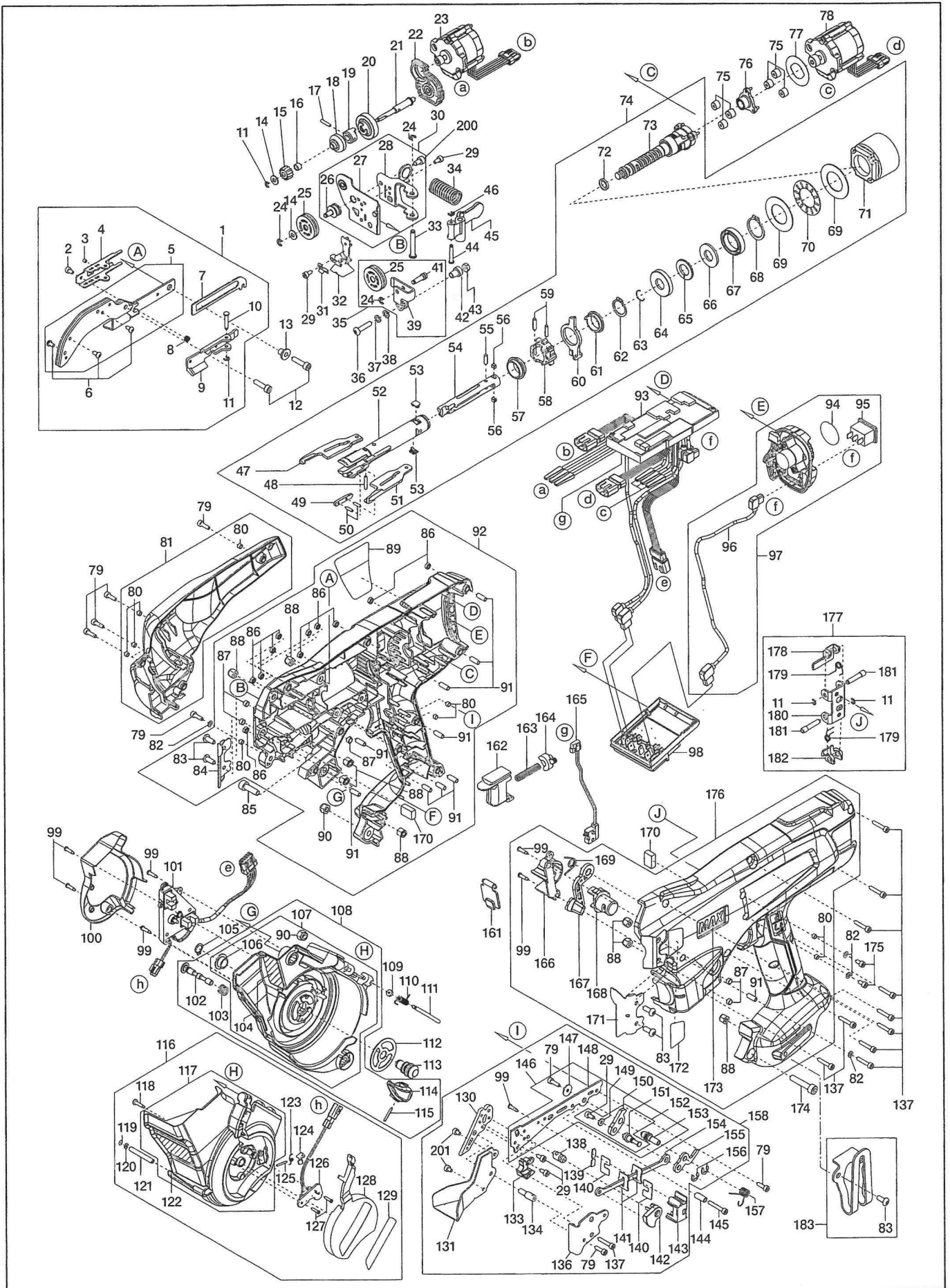
BEFORE USING THIS TOOL, STUDY THIS MANUAL TO ENSURE SAFETY WARNING AND INSTRUCTIONS.

KEEP THESE INSTRUCTIONS WITH THE TOOL FOR FUTURE REFERENCE.

MAY 2021

RB611T

EXPLODED VIEW AND SPARE PARTS LIST



Item	PartCode	Description	Item	PartCode	Description
1	RB70800	ARM A ASSY	57	RB12612	SLEEVE GUIDE
2	BB40481	BOLT 3 x 5	58	RB12615	SLEEVE B
3	AA71408	SCREW M3 x 3	59	FF21234	SPRING PIN 3 X 12
4	RB12633	WIRE GUIDE BASE	60	RB12617	CUTTER RING
5	RB81331	ARM A UNIT	61	RB12618	CUTTER RING GUIDE
6	BB41714	BOLT 3 x 5 SG	62	JJ21606	C-RING 15
7	RB12636	WIRE GUIDE LEVER	63	JJ80901	C-RING 11
8	KK29117	COMPRESSION SPRING 9117	64	RB12714	BUMPER GUIDE
9	RB70802	WIRE GUIDE UNIT	65	RB12619	BUMPER
10	FF41865	STEP PIN 1865	66	EE39859	WASHER 11.1 x 23.4 x 2
11	JJ10113	E-RING 2.5	67	LL11756	BEARING 6803ZZ
12	BB40420	BOLT 4 x 16	68	JJ21603	C-RING 20
13	FF52115	HOLLOW PIN 2115	69	EE39865	WASHER 20 x 35 x 1
14	EE39861	WASHER 4.3 x 9 x 1	70	LL41003	THRUST BEARING AXK1104
15	RB12865	FEEDING GEAR A	71	RB12620	INTERNAL GEAR
16	FF51715	HOLLOW PIN 1715	72	RB12720	D RING
17	FF31559	PARALLEL PIN 1559	73	RB70699	TIP AXIS A UNIT
18	RB12740	SHAFT COLLAR	74	RB70613	TWIST ASSY
19	RB12653	CLUTCH B	75	RB12622	PLANETARY GEAR
20	RB12651	CLUTCH A	76	RB70642	SUN GEAR UNIT
21	RB12652	FEEDING GEAR SHAFT A	77	RB12623	WASHER, TWIST AXIS
22	RB70700	FEEDING MOTOR BASE UNIT	78	RB70617	TWISTING MOTOR
23	RB70627	FEEDING MOTOR	79	BB40425	BOLT 3 x 10
24	JJ10514	E-RING 3 CF	80	FF51817	HOLLOW PIN 1817
25	RB70625	FEEDING GEAR B UNIT	81	RB70684	MOTOR COVER UNIT
26	RB12964	FEEDING GEAR SHAFT B	82	EE32104	WASHER 2-3
27	RB70885	FEEDING GEAR BASE UNIT	83	BB41706	BOLT 4 x 10 CF
28	RB12963	SPRING BASE	84	RB12868	COVER L (611T)
29	BB40824	BOLT 3 x 6	85	BB40310	BOLT 5 X 16
30	RB81333	FEEDING GEAR BASE ASSY	86	CC41104	HEX. NUT 1-3
31	RB12659	LEAF SPRING	87	FF51710	HOLLOW PIN 1710
32	RB70807	WIRE GUIDE C UNIT	88	CC49308	HEX NUT M4
33	FF41867	STEP PIN 1867	89	RB12871	SPECIFICATION LABEL
34	KK29119	COMPRESSION SPRING 9119	90	CC49411	HEX NUT M5
35	RB81334	RELEASE LEVER A ASSY	91	FF51714	HOLLOW PIN 1714
36	BB41715	BOLT 4 X 18 SG	92	RB81351	FRAME L ASSY (611T)
37	EE11103	SPRING WASHER 2-4	93	RB81332	MAIN CIRCUIT BOARD UNIT
38	EE39825	WASHER 4.5 X 7.4 X 0.8	94	RB12687	LABEL, TORQUE DIAL
39	RB12866	RELEASE LEVER A	95	RB70457	MAIN SWITCH UNIT (397)
41	FF41877	STEP PIN 1877	96	RB70626	POWER CORD ORANGE UNIT
42	FF52118	HOLLOW PIN 2118	97	RB70637	SWITCH BASE ASSY
43	CC42512	HEX NUT 1A M4 CF	98	RB70697	ELECTRODE UNIT
44	FF41868	STEP PIN 1868	99	AA05952	SCREW 2.6 X 10
45	RB12657	RELEASE LEVER B	100	RB12674	MAGAZINE CAP
46	JJ10510	E-RING 2.3 CF	101	RB70640	SENSOR CIRCUIT BOARD F UNIT
47	RB12609	HOOK L	102	RB12673	MAGAZINE STOPPER SHAFT
48	RB12853	CARBIDE PIN 2.5 x 14.8	103	KK24186	COMPRESSION SPRING 4186
49	RB12616	SLEEVE COVER	104	RB12684	WIRE OPERATION LABEL
50	FF21267	SPRING PIN 2 x 8	105	JJ21601	C-RING 8
51	RB12610	HOOK R	106	FF52116	HOLLOW PIN 2116
52	RB12614	SLEEVE A	107	RB81296	MAGAZINE UNIT
53	RB12712	KEY	108	RB81295	MAGAZINE SUB ASSY
54	RB12611	CENTER HOOK	109	EE39609	PLAIN RUBBER WASHER 1.8x6x2
55	FF31718	PARALLEL PIN 1718	110	KK34098	TORSION SPRING 4098
56	RB12713	KEY B	111	FF43419	STEP PIN 3419

Item	PartCode	Description	Item	PartCode	Description
112	RB12715	MAGAZINE PLATE	171	RB12869	COVER R (611T)
113	RB12671	ROTARY SHAFT	172	RB12689	WARNING LABEL
114	RB12672	MAGAZINE STOPPER	173	RB12661	BRAND PLATE
115	FF21629	SPRING PIN 2 X 14	174	BB40708	BOLT 5 X 25
116	RB81336	MAGAZINE COVER ASSY	175	BB40716	BOLT 3 X 6 CF
117	RB81299	MAGAZINE COVER UNIT	176	RB70809	FRAME R ASSY (611T)
118	AA05560	SCREW 3 X 12 CF	177	RB70616	JAW BASE ASSY
119	HH14169	O-RING AS 568-003 1A	178	RB12627	JAW B
120	EE39860	WASHER 5 X 2.6 X 1	179	KK33249	TORSION SPRING 3249
121	FF51713	HOLLOW PIN 1713	180	RB12625	JAW BASE
122	RB12829	NOTICE LABEL	181	FF41864	STEP PIN 1864
123	KK34097	TORSION SPRING 4097	182	RB12626	JAW A
124	RB12669	REEL PRESS	183	RB81184	BELT HOOK ASSY
125	FF31639	PARALLEL PIN 1639	200	BB40849	BOLT 4 X 6
126	RB70641	SENSOR CIRCUIT BOARD G UNIT	201	BB40719	BOLT 3 X 4
127	AA31724	SCREW 2 X 8			
128	RB12667	MAGAZINE COVER CAP			
129	RB12870	611T LABEL			
130	RB12864	CURL GUIDE B			
131	RB12863	CURL GUIDE A			
133	RB70666	WHIRE GUIDE B UNIT			
134	RB12641	CURL GUIDE SHAFT			
136	RB12974	ARM C			
137	BB40810	BOLT 3 X 16			
138	RB12894	FIXED CUTTER			
139	RB12723	CON-ROD GUIDE B			
140	RB12721	CON-ROD COVER			
141	RB12722	CON-ROD GUIDE A			
142	RB12643	CUTTER			
143	RB12724	CON-ROD BASE			
144	FF51711	HOLLOW PIN 1711			
145	BB40717	BOLT 3 X 20 CF			
146	RB70682	ARM B UNIT			
147	EE39857	WASHER 3.2 x 11 x 1			
148	RB12637	ARM B			
149	EE39858	WASHER 32 X 7 X 1			
150	RB12645	CUTTER LEVER A			
151	RB12648	CUTTER PIN			
152	RB70683	CUTTER LEVER A UNIT			
153	RB12647	CUTTER SHAFT			
154	RB12649	CON-ROD			
155	RB12646	CUTTER LEVER B			
156	JJ10509	E-RING 4 CF			
157	KK33398	TORSION SPRING 3398			
158	RB70804	ARM B ASSY			
161	RB12815	WINDOW			
162	RB12080	TRIGGER			
163	KK23656	COMPRESSION SPRING 3656			
164	RB12101	TRIGGER LOCK LEVER			
165	RB70827	SWITCH HARNESS UNIT			
166	RB12665	RELEASE BUTTON BASE			
167	RB12664	RELEASE STOPPER			
168	RB12662	RELEASE BUTTON			
169	KK33401	TORSION SPRING 3401			
170	RB12725	SPONGE			